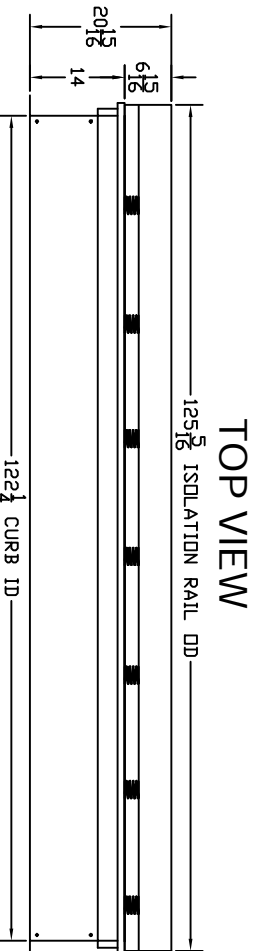
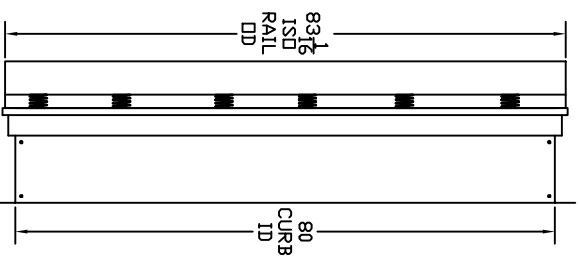
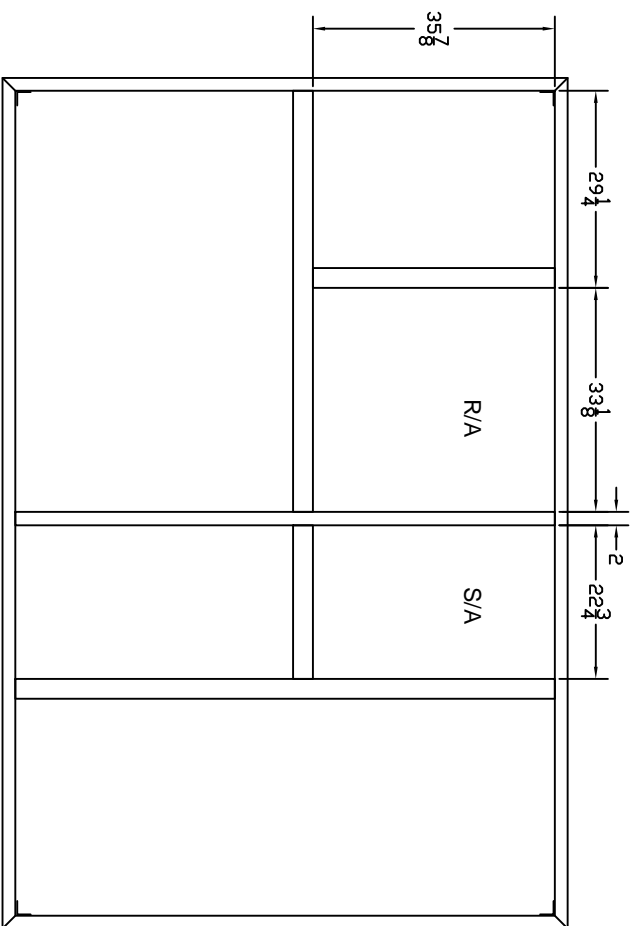


SUBMITTAL

REVISIONS			
REV	ECN #	DESCRIPTION	DATE



FEATURES:

1. CURB AND ISOLATION RAIL SHIPPED FULLY ASSEMBLED
2. ISOLATION RAIL FABRICATED OF ALUMINUM EXTRUSION
3. CURB FABRICATED OF HEAVY GAUGE GALVANIZED STEEL
4. CURB BODY IS ***** CONSTRUCTION
5. FULL PERIMETER WOOD NAILER INCLUDED
6. FULL PERIMETER WEATHER SEAL INCLUDED
7. DUCT SUPPORT INCLUDED
8. CANVAS DUCT NOT INCLUDED

FRONT VIEW

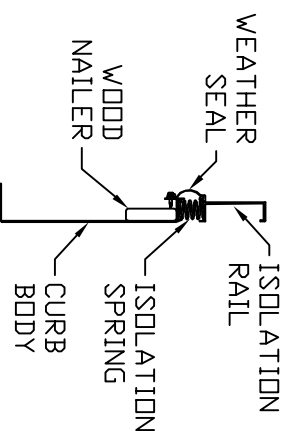
TOP VIEW

RIGHT VIEW

Approved: _____

Date: _____

YORK: ZF240-300
ISOLATION CURB W/2" DEFL



THE INFORMATION CONTAINED IN THIS DOCUMENT IS PROPRIETARY TO CAMBRIDGEPORT AIR SYSTEMS. THIS DOCUMENT MAY NOT BE ISSUED TO ANOTHER PARTY WITHOUT PRIOR WRITTEN CONSENT AND AUTHORIZATION. © CAMBRIDGEPORT AIR SYSTEMS. ALL RIGHTS RESERVED.
TOLERANCES DECIMALS: .000 = +/- .063, .00 = +/- .063, .0 = +/- .063 ANGLES: +/- 1 DEG FRACTIONS: +/- 1/16"

Cambridgeport 1-800-648-2872	
HVAC Accessories & Engineered Systems	
DESCRIPTION	CURB, ISOLATION, YORK
CUSTOMER/JOB NAME	SUBMITTAL
JOB#	DATE
SCALE	PAGE
DRAWN BY	DWG #
CHECKED BY	(EMS #)
	1003655