

DATE: _____
 COMPANY: _____
 JOB NAME: _____
 SUBMITTED BY: _____
 NOTES: _____

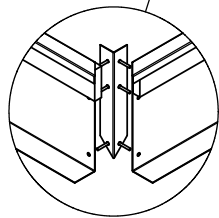
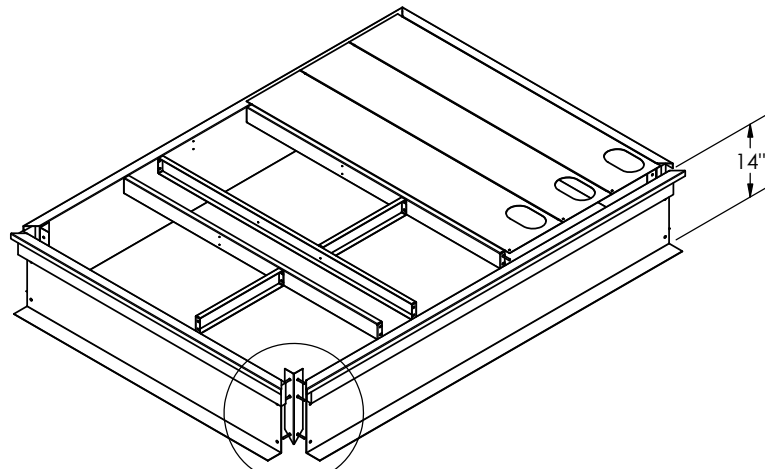
ROOF CURB SUBMITTAL #1015149

TRANE BAYCURB 044
 CURB ASSEMBLY NUMBER
 1015149

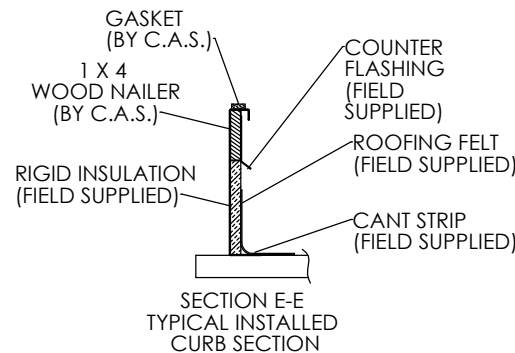
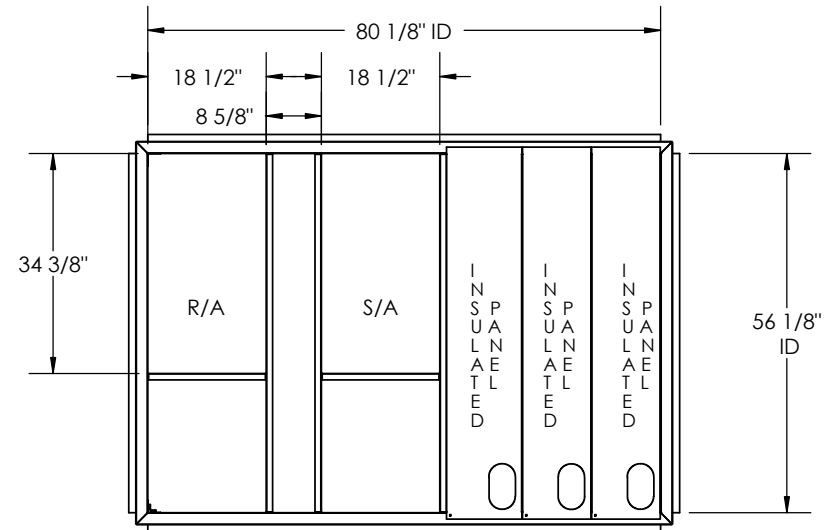
Drawn By: RTO
 Drawn Date: 10/15/09

REV:

ESTIMATED WEIGHT: 128 LBS.



DETAIL A



ROOF CURB IS LABELED WITH RTU# IF APPLICABLE

FEATURES:

- MITERED TOP CORNERS
- ROOF CURB BODY IS FABRICATED OF HEAVY GAUGE GALVANIZED STEEL.
- FULL PERIMETER WOOD NAILER.
- PRE-PUNCHED ASSEMBLY HOLES AND HARDWARE INCLUDED FOR DUCT SUPPORT INSTALLATION.
- ROOF CURB IS SHIPPED KNOCKED DOWN.

© 2007 COX ENGINEERING COMPANY
 DBA CAMBRIDGEPORT AIR SYSTEMS. ALL RIGHTS RESERVED. TM

Cambridgeport
AIR SYSTEMS, INC.

GEORGETOWN, MA 01833

PHONE 1-800-648-2872 FAX 1978-462-9189