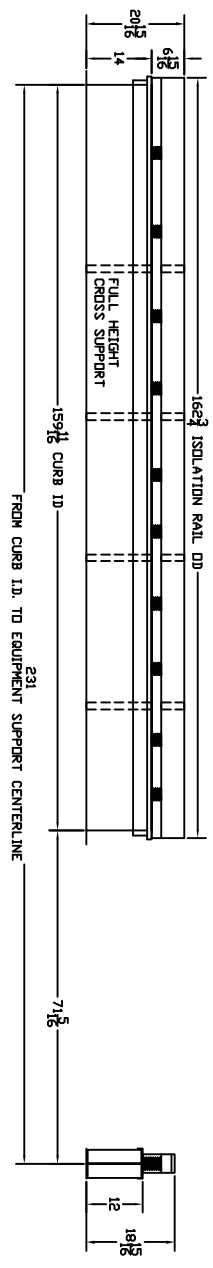
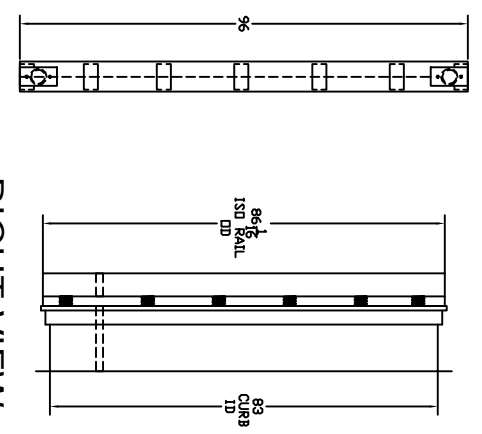
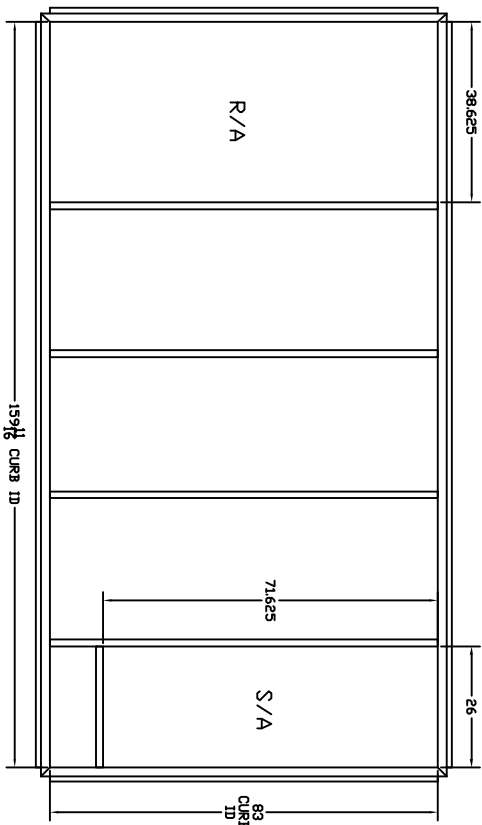


# SUBMITTAL



FEATURES:

1. CURB AND ISOLATION RAIL SHIPPED FULLY ASSEMBLED
2. ISOLATION RAIL FABRICATED OF ALUMINUM EXTRUSION
3. CURB FABRICATED OF HEAVY GAUGE GALVANIZED STEEL
4. MITERED CORNERS
5. FULL PERIMETER WOOD NAILER
6. FULL PERIMETER WEATHER SEAL
7. DUCT SUPPORT INCLUDED
8. CANVAS DUCT NOT INCLUDED
9. PEDESTAL WITH FLS SPRINGS INCLUDED

FRONT VIEW

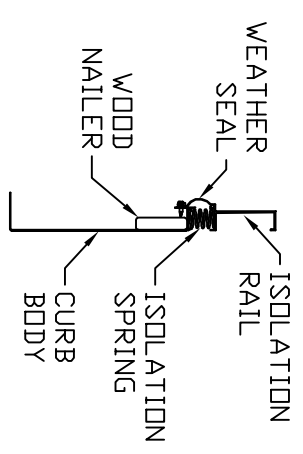
TOP VIEW

RIGHT VIEW

Approved: \_\_\_\_\_

Date: \_\_\_\_\_

YORK: Z33 PARTIAL  
ISOLATION CURB W/2" DEFLECTION



THE INFORMATION CONTAINED IN THIS DOCUMENT IS PROPRIETARY TO CAMBRIDGEPORT AIR SYSTEMS. THIS DOCUMENT MAY NOT BE ISSUED TO ANOTHER PARTY WITHOUT PRIOR WRITTEN CONSENT AND AUTHORIZATION. \* CAMBRIDGEPORT\* AND THE CAMBRIDGEPORT LOGO ARE REGISTERED TRADEMARKS OF CAMBRIDGEPORT AIR SYSTEMS. ALL RIGHTS RESERVED.

TOLERANCES DECIMALS .000 = +/- .063, .00 = +/- .063, .0 = +/- .063 ANGLES +/- 1 DEG FRACTIONS +/- 1/16"

<b>Cambridgeport</b> <sup>TM</sup>	
1-800-648-2872	
HVAC Accessories & Engineered Systems	
DESCRIPTION	CURB, ISOLATION, YORK, 455 PARTIAL
CUSTOMER/JOB NAME	SUBMITTAL
JOB#	DATE
SCALE	PAGE 1 OF 1
DRAWN BY	DWG # 1003659
CHECKED BY	(EWS #)